



NorVal NEWS



September 2020

Where does my power come from?



NorVal Electric Co-op is proud to purchase a diverse portfolio of power, including a majority of it from renewable resources. The power we purchase is supplied through Central Montana Electric Power Cooperative, headquartered in Great Falls.


CMEPC purchases power on behalf of NorVal based on the contracts we have signed with them to ensure that our rates are affordable and the electricity we provide is reliable to you, our valued members. Your Board has entered into contracts with CMEPC to guarantee that for the decades to come we will continue to pay an affordable rate, no matter what the fluctuating power market does.

Currently, we purchase about 70 percent of our power supply from Western Area Power Administration or WAPA through the power created by the various dams, including our very own Fort Peck Dam.

The other 30 percent of our power is supplied by Basin Electric Power Cooperative. Basin has a very diverse portfolio of energy production and is always on the cutting-edge of new technological advancements. They produce traditional coal power, but also own wind farms throughout North and South Dakota,

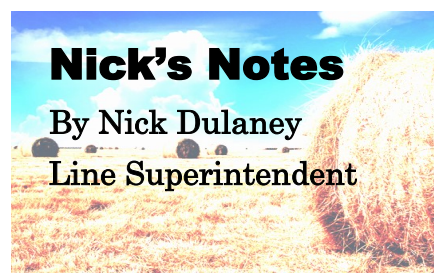
as well as hydropower, some natural gas and even have nuclear. Their research and development team is constantly working to find new and alternative ways to produce electricity!

So how does NorVal Electric know how much power to buy every month? The electricity needs to be available when you get home from work and turn on the light switch in the evening as well as first thing in the morning to feed your coffee pot at rays first light. We use a combination of averages and projections based on past historical data to provide an educated assessment of what we will need to buy for the future, taking into account weather predictions and future load growth. But the really fascinating part is that the various power generation plants carefully monitor the needs of their consumers and adjust supply accordingly for the busier times of the day, month and year. Because you can't store electricity, it needs to be available within a split second when you need it and the power grid adjusts accordingly to get it to you.

In an uncertain world it's nice to know that you can rely on a few steadfast things, including reliable power to be there when you need it. Your co-op employees work around the clock to do just that! 

Nick's Notes

By Nick Dulaney
Line Superintendent



continuing to work on the Pliley overhead to underground project.

We have installed wire in the ground to TC Energy Pump Station 10. The next part of the project is to terminate, or finalize the connections, to the Pump Station.

Electro-Test, our substation equipment inspectors were here recently performing the annual inspections. This work is done to ensure that everything in the substation is working at optimal safe capacity, and those reports are sent to our insurance carrier to assure them that the products they are insuring are in working order. Additionally, they check our OCR's or Oil Circuit Reclosers while they are here. The OCR's operate when something


Wishing all students, parents and teachers a great school year!

The crews have been working on the Hinsdale East circuit rebuild. They are continuing to work on the Pliley overhead to underground project.

comes into contact with the power line to clear the obstruction. Those are the set of blinks you observe before the power goes out, and are by design to help clear the line before the power goes out.

The crew has installed about twelve new services throughout the NorVal service territory. Additionally, they have performed numerous service upgrades, including a few 200 amp to 400 amp upgrades.

We also replaced the three phase line to some irrigation services. This project has been set for completion for a while, but we had to time it between harvests. It's nice to have it done, and I'm sure the irrigators who use the line appreciate the upgrade as well!

As the construction season is winding down, please remember to give us a call if you have any projects planned for the end of 2020. Also, with harvest in full swing, be sure to have a spotter as you move from one field to another to ensure you have adequate clearance under the power line. If you have one ground clearance area you're not sure about, we'd be happy to come out and lift the line - just give us a heads up beforehand! Be safe out there! 



Recipe of the Month

Fall Harvest Baked Apples



Ingredients

- 8 medium red apples, cored
- 1/4 c. butter
- 1/3 c. maple syrup
- 1/2 tsp. ground cinnamon
- 1/3 tsp. ground ginger
- 1/2 lemon, juiced
- 1 tsp. vanilla extract
- 1/3 c. coarsely chopped walnuts

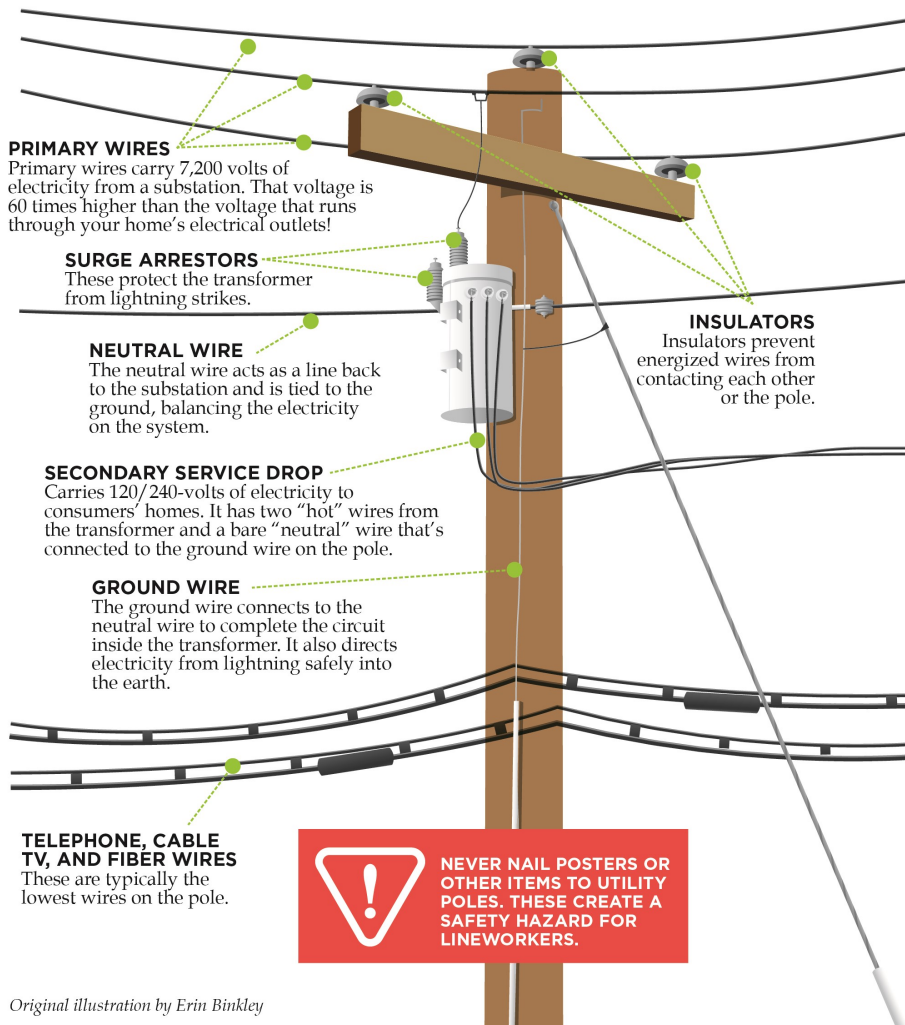
Directions

Preheat oven to 350 degrees. Place apples in a 9x13 inch baking dish. In a small saucepan over medium heat, combine butter, maple syrup, cinnamon, ginger, lemon juice and vanilla. Bring to a boil and drizzle over apples evenly. Cover with foil, and bake in preheated oven for 20 minutes. Remove cover and continue to bake for 10 minutes or until apples are tender. Serve warm with sprinkled walnuts on top!

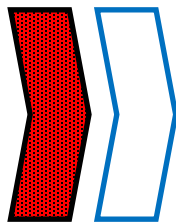


WHAT'S ON THAT POLE?

This illustration shows the basic equipment found on electric utility poles. The equipment varies according to the location and the service they provide.



Original illustration by Erin Binkley



OUR OFFICE WILL BE CLOSED
SEPTEMBER 7TH

IN OBSERVANCE OF LABOR DAY

Have a safe and fun holiday!



Connect With Us

- 54091 US Hwy 2 W., Glasgow
- PO Box 951, Glasgow, MT 59230
- 406-228-9351
- www.norval.coop
- facebook.com/norvalelectric
- This institution is an equal opportunity provider and employer.

NorVal Electric Cooperative Directors

District 1	Lee Risa	762-3247
District 2	Sam Gundermann	724-3405
District 3	Rick Molvig <i>Vice Pres.</i>	367-5328
District 4	Chris Christensen	364-2367
District 5	Kurt Breigenzer <i>S/T</i>	228-9465
District 6	Ron Reddig <i>President</i>	392-5257
District 7	Rocky Kittleson	367-5366
District 7	Gary Meyer	526-3600

Energy Efficiency Tip of the Month

The average household owns 24 electronic products, which account for roughly 12% of home energy use. When shopping for electronics, consider purchasing ENERGY STAR®-certified products, which can be 70% more efficient than conventional models.

Source: www.energystar.gov

