

NorVal News

June 2022

Safety Tips for Before, During and After the Storm

Storm season is in full swing. Many summer storms have the potential to produce tornadoes—they can happen anytime, anywhere, and can bring winds over 200 miles per hour.

In April, a video of NBC Washington chief meteorologist Doug Kammerer went viral. During a live broadcast, Kammerer called his teenage son to warn him of a tornado that was headed straight for their home. Knowing the kids were likely playing video games and not paying attention to the weather, he told them to head straight to the basement. Kammerer debated if he should call his family on-air, but he knew it was the right thing to do. Luckily, the kids made it safely through the storm.

As adults, we understand the importance of storm safety, but younger children and teens may not realize the dangers storms pose. That's why it's so important to talk to your family and have a storm plan in place. Here are several tips you can share with your loved ones.

Before the Storm


- Talk to your family about what to do in the event of a severe storm or tornado. Point out the safest location to shelter, like a small, interior, windowless room on the lowest level of your home. Discuss the dangers of severe thunderstorms; lightning can strike 10 miles outside of a storm. Remember: when you hear thunder roar, head indoors.
- Make a storm kit. It doesn't have to be elaborate—having a few items on hand is better than nothing at all. Try to include items like water, non-perishable foods, a manual can opener, a First-Aid kit, flashlights and extra batteries, prescriptions, baby supplies and pet supplies. Keep all the items in one place for easy access if the power goes out.

During the Storm

- Pay attention to local weather alerts—either on the TV, your smartphone or weather radio—and understand the types of alerts. A thunderstorm or tornado watch means these events are possible and you should be prepared; a warning means a thunderstorm or tornado has been spotted in your area and it's time to take action.
- If you find yourself in the path of a tornado, head to your safe place to shelter, and protect yourself by covering your head with your arms or materials like blankets and pillows.
- If you're driving during a severe storm or tornado, do not try to outrun it. Pull over and cover your body with a coat or blanket if possible.

After the Storm

- If the power is out, conserve your phone battery as much as possible, limiting calls and texts to let others know you are safe or for emergencies only.
- Stay off the roads if trees, power lines or utility poles are down. Lines and equipment could still be energized, posing life-threatening risks to anyone who gets too close.
- Wear appropriate gear if you're cleaning up storm debris on your property. Thick-soled shoes, long pants and work gloves will help protect you from sharp or dangerous debris left behind.

Summer is a time for many fun-filled activities, but the season can also bring severe, dangerous weather. Talk to your loved ones about storm safety so that everyone is prepared and knows exactly what to do when a storm strikes. 

54091 US Hwy 2 W, Glasgow
P.O. Box 951, Glasgow, MT 59230
facebook.com/norvalelectric
406-228-9351
www.norval.coop

NorVal Electric Cooperative Directors

- District 1 **Kevin Nelson** 724-3202
District 2 **Sam Gundermann** 724-3405
District 3 **Rick Molvig** **Vice Pres** 367-5328
District 4 **Chris Christensen** 364-2367
District 5
District 6 **Ron Reddig** **President** 392-5257
District 7 **Rocky Kittleson** **S/T** 367-5366

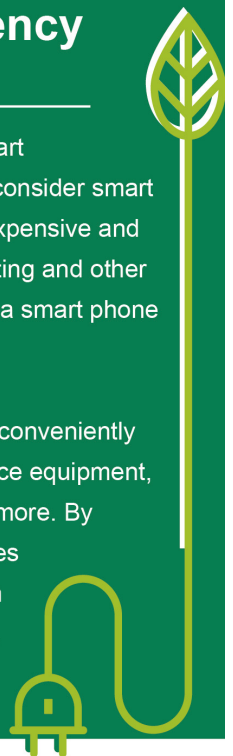
Your Touchstone Energy® Cooperative 
This institution is an equal opportunity provider and employer.

Energy Efficiency Tip of the Month

If you're looking to add smart technology to your home, consider smart plugs. Smart plugs are inexpensive and can be used to control lighting and other electronic devices through a smart phone app.

With smart plugs, you can conveniently manage lighting, home office equipment, video game consoles and more. By powering off unused devices when you're away, you can save energy (and money!).

Source: energystar.gov



2022 NorVal Scholarship Recipients



Megan Fast

Lustre High School
Bismarck State University



Montaya Idler

Hinsdale High School
Dickinson State University



Trey Johnson

Hinsdale High School
Dickinson State University



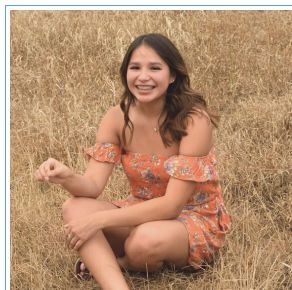
Iris McKean

Glasgow High School
University of Montana



Bergen Miller

Glasgow High School
Montana State University



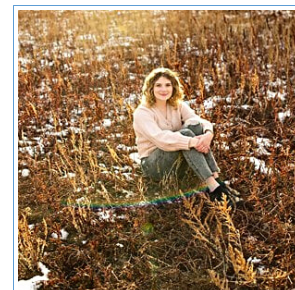
Deja Morgan

Nashua High School
Montana State University



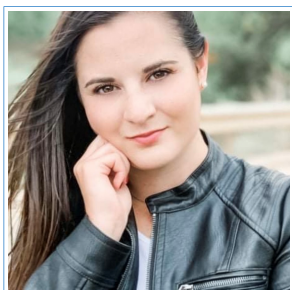
Emmalynn Page

Glasgow High School
South Dakota State University



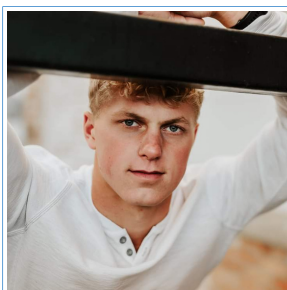
Kate Parks

Glasgow High School
Utah State University



Victoria Pehlke

Glasgow High School
University of Montana- Western



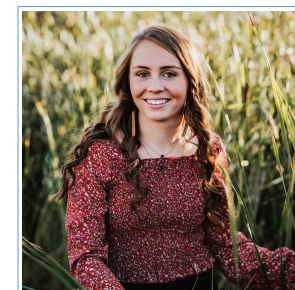
Dalton Sand

Glasgow High School
United States Naval Academy



Cole Taylor

Opheim High School
Montana State University
*Basin and MECA
Scholarship Recipient*



Blarie Westby

Glasgow High School
Montana State University

Nick's Notes

By Nick Dulaney, Line Superintendent

Construction season is finally here! The crew is working on some water projects in the Wolf Point and Lustre area. We are installing primarily underground line extensions to these services with hopes to have them energized in the next few weeks.

We also wanted to give a heads up to the farming members with new equipment. If you are unsure if your equipment will fit underneath the power lines, please give us a call and we will come out and measure it for you and help you get under them safely.

I also want to mention that our pad mount transformers now have a lead time of 166 weeks (up to 3 years). With that being said, we are doing all we can to make things work, but we are looking at a limited number of projects this year and going into the next couple years. If you have a project in mind, please stop in or give us a call. We want to be able to do as many projects as possible, but supplies are very limited everywhere. 🚧



**Know what's below.
Call before you dig.**